

HEAD MARKINGS



FIG. 1 - It is desirable that there should be a blaze with even cheeks



FIG. 2 - A weakening of this factor causes Panda eye patches, and lambs with badly misshaped faces should not be registered

BODY MARKINGS

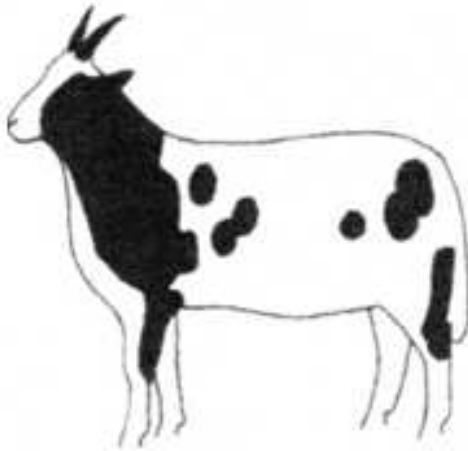


FIG. 1 - Body markings can sometimes appear **ON** upper limbs and should not be confused with spotted legs.

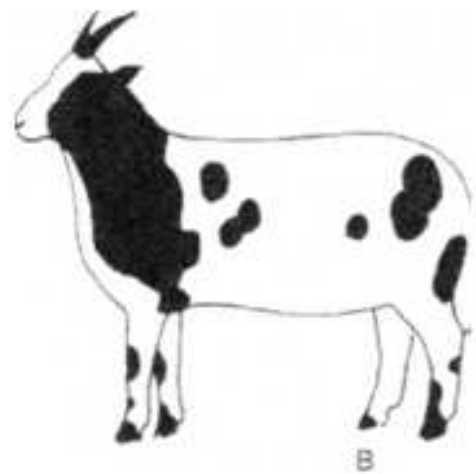


FIG. 2 - Black patches on knees and pasterns often pass to the next generation and should be avoided
A VERY SMALL AMOUNT OF BLACK ON TOP IS ACCEPTABLE